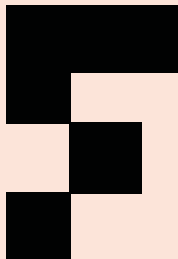


→ FLOOR PLANS

# THE SHIRT FACTORY GLOUCESTER



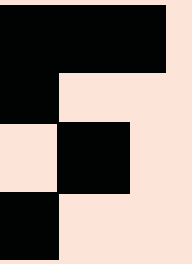


# GROUND FLOOR

Unit	Size-Sqm	Size-Sqft
1	52.7	573.1
2	47.4	510.0
3	43.7	470.2
4	32.4	372.7
5	57.3	616.5
6	RESERVED	
7	RESERVED	
8	RESERVED	
9	92.4	994.2
9a	13.2	142
10	97.2	1045.9
11	RESERVED	



- Workshop/Storage
- Studio/Office
- Communal Facilities

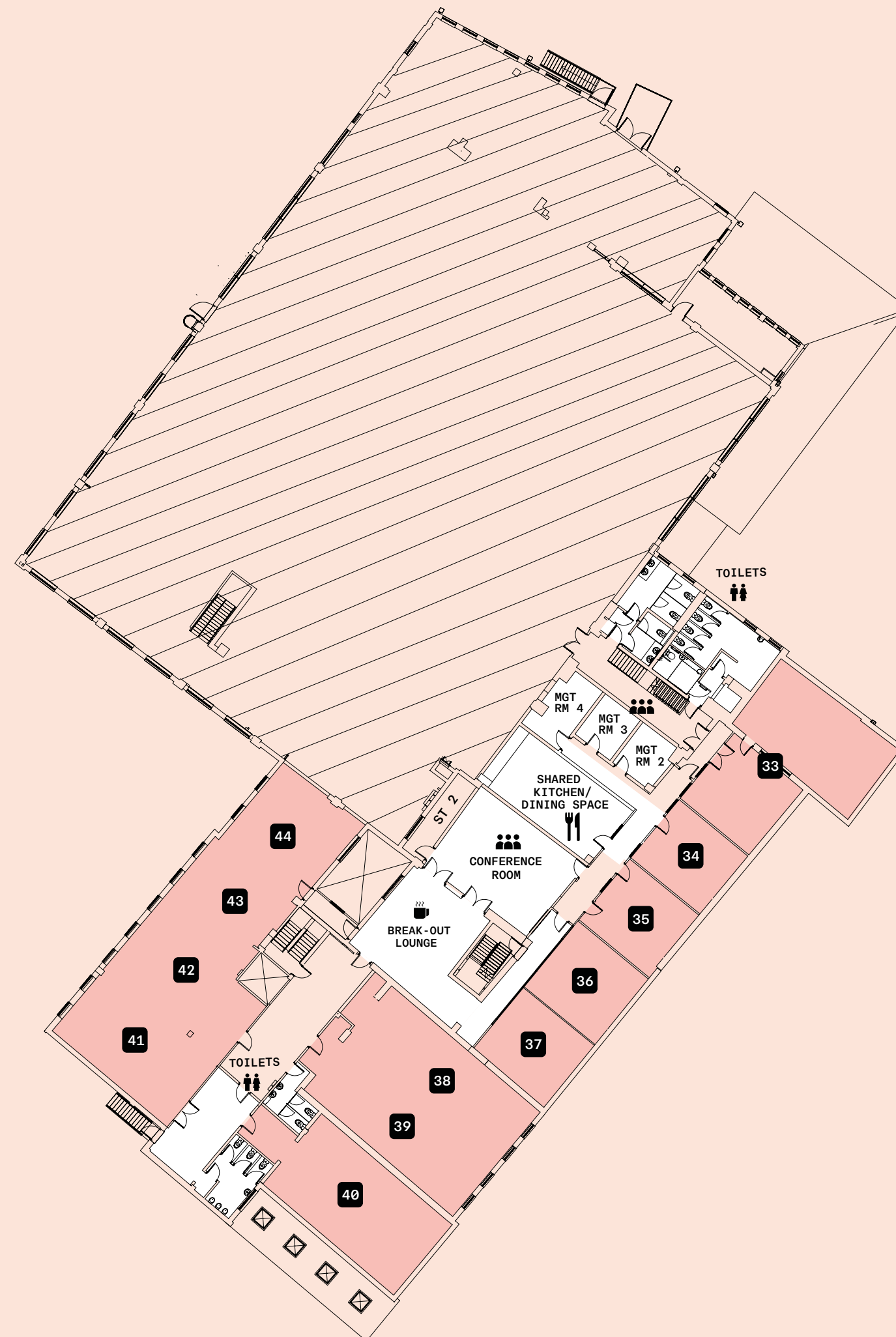


## FIRST FLOOR

Unit	Size-Sqm	Size-Sqft
33	77.9	838.2
34	27.8	299.1
35	26.5	285.1
36	27.9	300.2
37	32.1	345.4
38	60.2	647.8
39	56.8	611.2
40	67.2	723.1
41	48.4	520.8
42	40.8	439
43	40.0	430.4
44	39.8	428.2

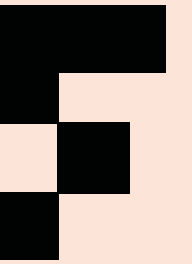
AVAILABLE  
AS ONE UNIT

AVAILABLE  
AS ONE UNIT



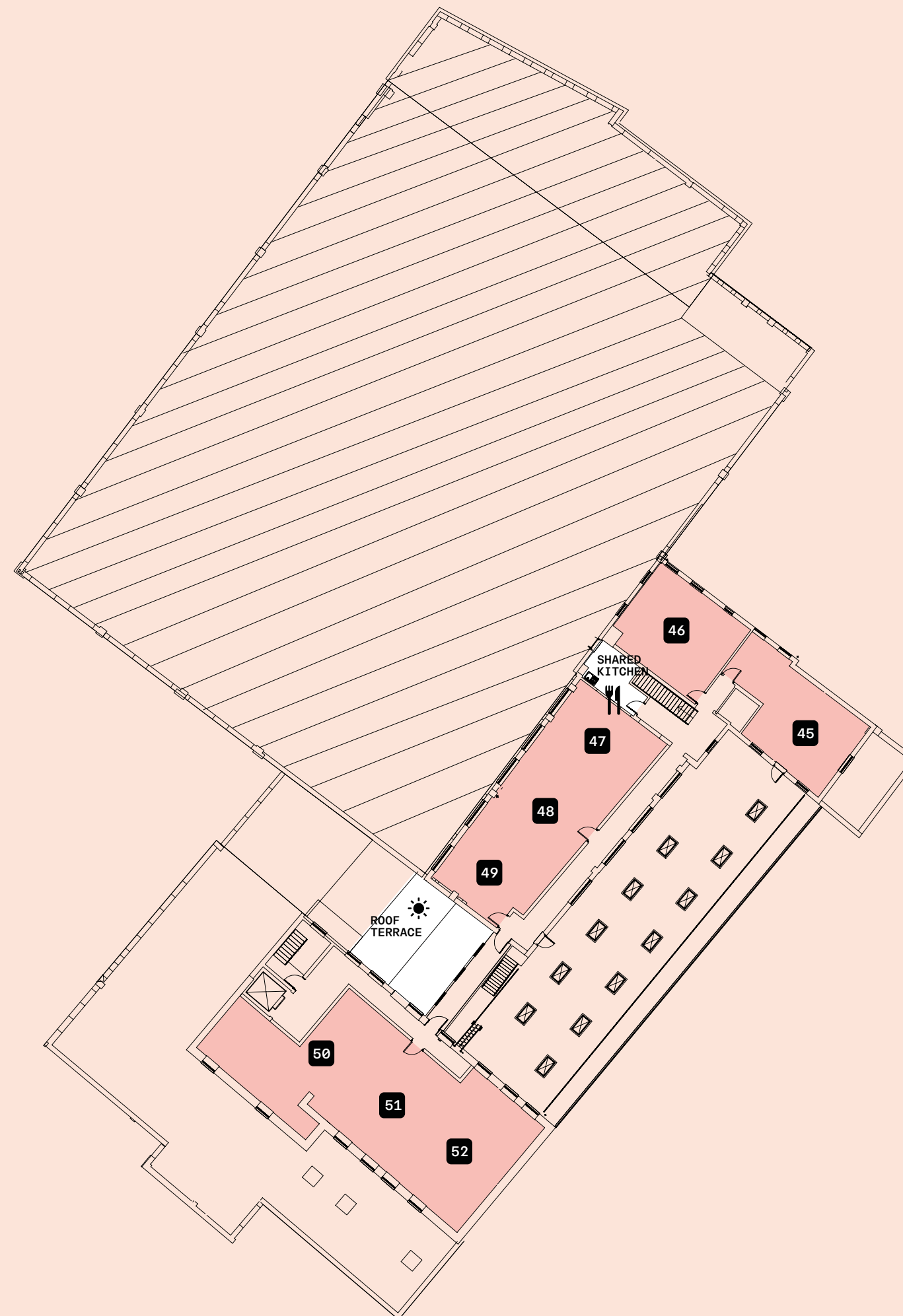
- Workshop/Storage
- Studio/Office
- Communal Facilities

# 2ND.



## SECOND FLOOR

Unit	Size-Sqm	Size-Sqft
45	39.7	427.2
46	39.9	429.3
47	39.8	428.2
48	35.1	377.7
49	21.9	235.6
50	57.5	618.7
51	34	365.8
52	51.3	552



- Workshop/Storage
- Studio/Office
- Communal Facilities

# → CONTACT

## → FOLLOW THE FACTORY

 @theshirtfactorygloucester

 [www.linkedin.com/company/the-shirt-factory-gloucester](https://www.linkedin.com/company/the-shirt-factory-gloucester)

 [theshirtfactorygloucester.co.uk](https://theshirtfactorygloucester.co.uk)

## → ALL ENQUIRIES

 [hello@theshirtfactory.co.uk](mailto:hello@theshirtfactory.co.uk)

 01452 905231

County to County Property Group and any joint agent give notice that:

1. They are not authorised to make or give any representations or warranties in relation to the property either here or elsewhere, either on their own behalf or on behalf of their client or otherwise. They assume no responsibility for any statement that may be made in these particulars. These particulars do not form part of any offer or contract and must not be relied upon as statements or representations of fact.
2. Any areas, measurements or distances are approximate. The text, images and plans are for guidance only and are not necessarily comprehensive. It should not be assumed that the property has all necessary planning, building regulation or other consents and County to County Property Group have not tested any services, equipment or facilities. Tenants must satisfy themselves by inspection or otherwise.
3. These particulars were prepared from preliminary plans and specifications before the completion of the units. These particulars, together with any images that they contain, are intended only as a guide. They may have been changed during construction and final specifications could vary. Prospective tenants should not rely on this information but must get their solicitor to check the plans and specification attached to their contract.
4. Plans are deemed to be correct but precise details may vary. Internal areas are accurate to within 5%

County to County Property Group [www.countytocounty.co.uk](https://www.countytocounty.co.uk)